

**the ROYAL & MCPHERSON theatres society**

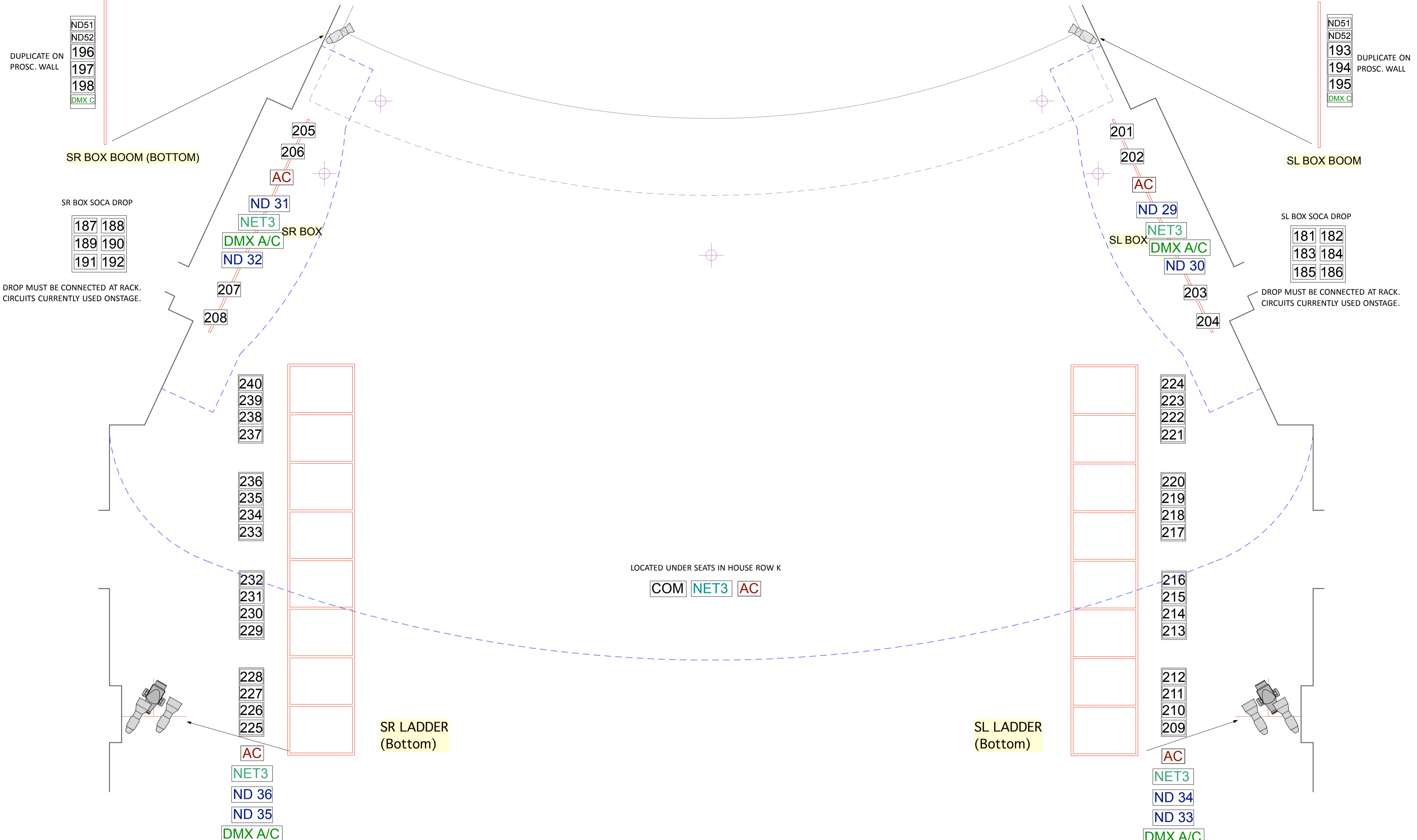
**CIRCUIT LAYOUT 2017**

**ROYAL THEATRE - STAGE**

264 DIMMERS + LED UNITS

36 HOUSELIGHT DIMMERS - ON OWN SYSTEM

LX PLOT: A. WILKINSON	1 OF 2
DIRECTOR:	
VENUE CAD: T. HEEMSKERK	
DRAWN BY: C. STEWART	
DATE: AUGUST 21, 2017	
SCALE: 1/4" = 1'-0" Arch "C"	REVISION: 1



DUPLICATE ON PROSC. WALL

DUPLICATE ON PROSC. WALL

DROP MUST BE CONNECTED AT RACK. CIRCUITS CURRENTLY USED ONSTAGE.

DROP MUST BE CONNECTED AT RACK. CIRCUITS CURRENTLY USED ONSTAGE.

LOCATED UNDER SEATS IN HOUSE ROW K

LOCATED WITH ALARM PANEL

LOCATED IN LIGHTING BOOTH  
 CAT 5 DRY x5  
 DMX A-D & DRY x7  
 WiFi NET NET3

LOCATED IN FOLLOWSPOT BOOTH

Dimmer Rack 241-264  
 CAM 200A HOUSE DIMMER TIE-IN  
 NET3 DMX A

**the ROYAL & MCPHERSON theatres society**

**CIRCUIT LAYOUT 2017**

**ROYAL THEATRE - FOH**

264 DIMMERS + LED UNITS

36 HOUSELIGHT DIMMERS - ON OWN SYSTEM

LX PLOT: A. WILKINSON

DIRECTOR:

VENUE CAD: T. HEEMSKERK

DRAWN BY: C. STEWART

DATE: AUGUST 21, 2017

SCALE: 1/4" = 1'-0" ARCH "C"

REVISION: 1

**2 OF 2**